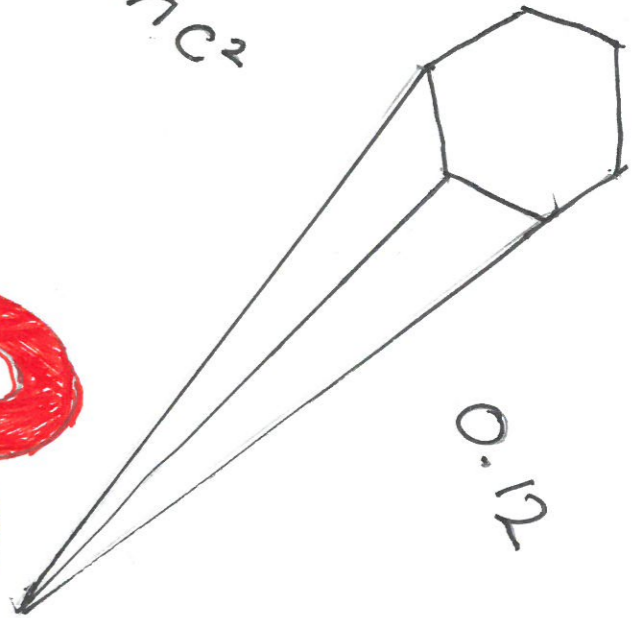


$$7a + 4b = 11ab$$

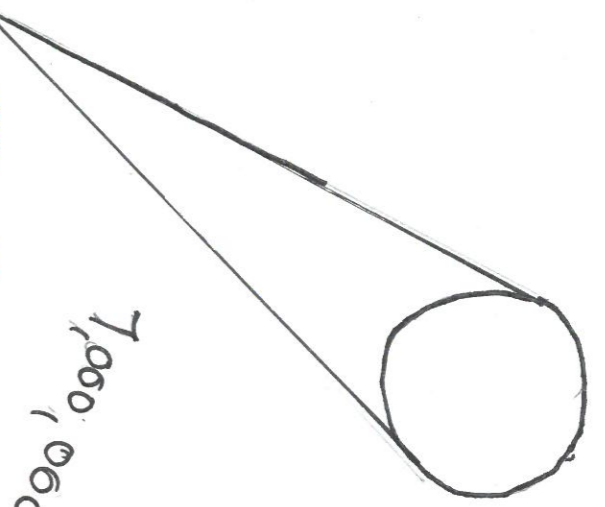
$$E = mc^2$$



0.12

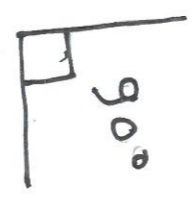
$\frac{0}{0}$

$$\frac{21}{300}$$



7,050,000

4.3



90°

PRIMARY

MATHEMATICS

CHALLENGE

2017

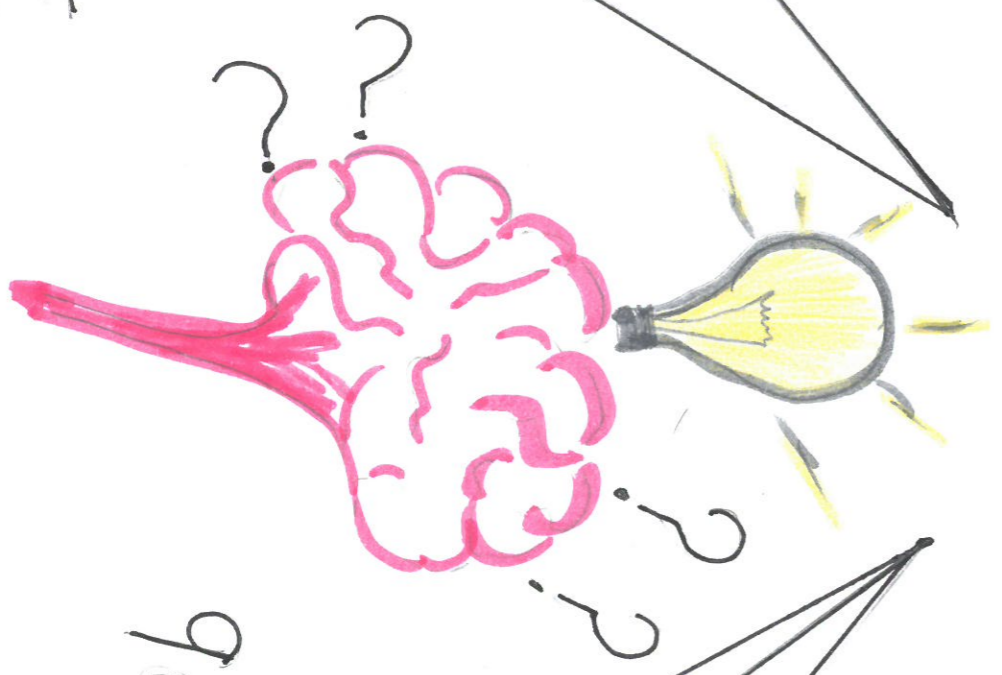
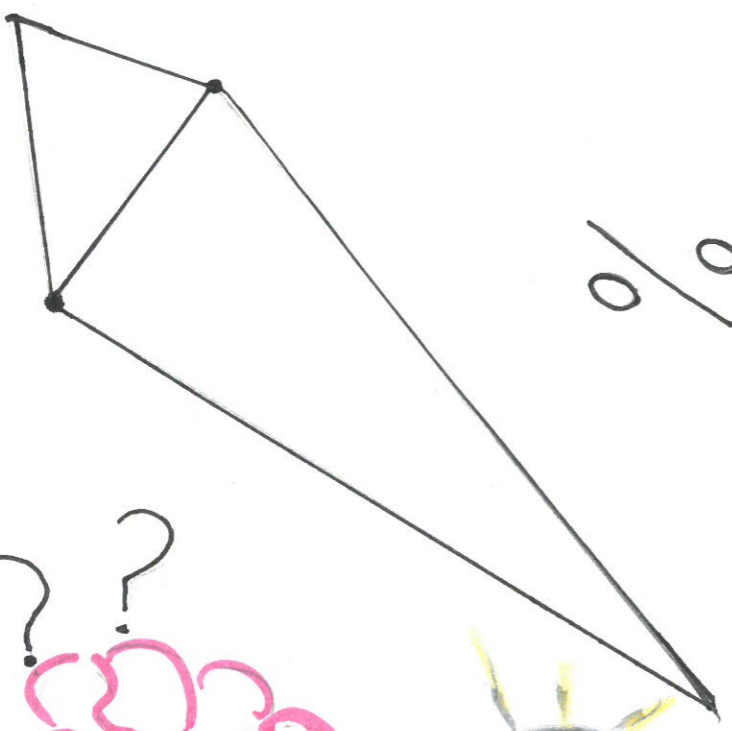
cm^3

m^2

120°

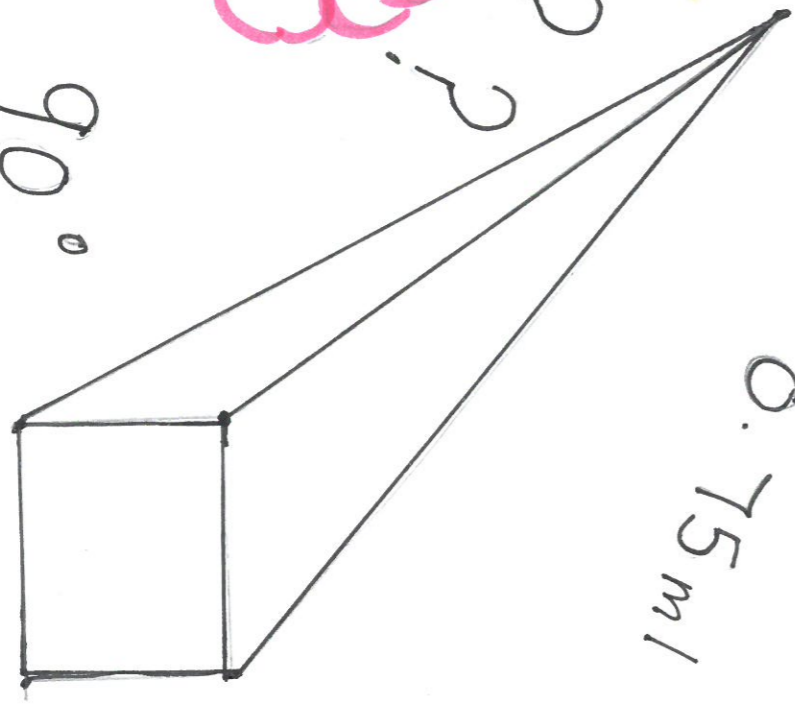
%

0.75 ml



90°

$\frac{1}{2}$



$$7 \times 9 = 63$$