

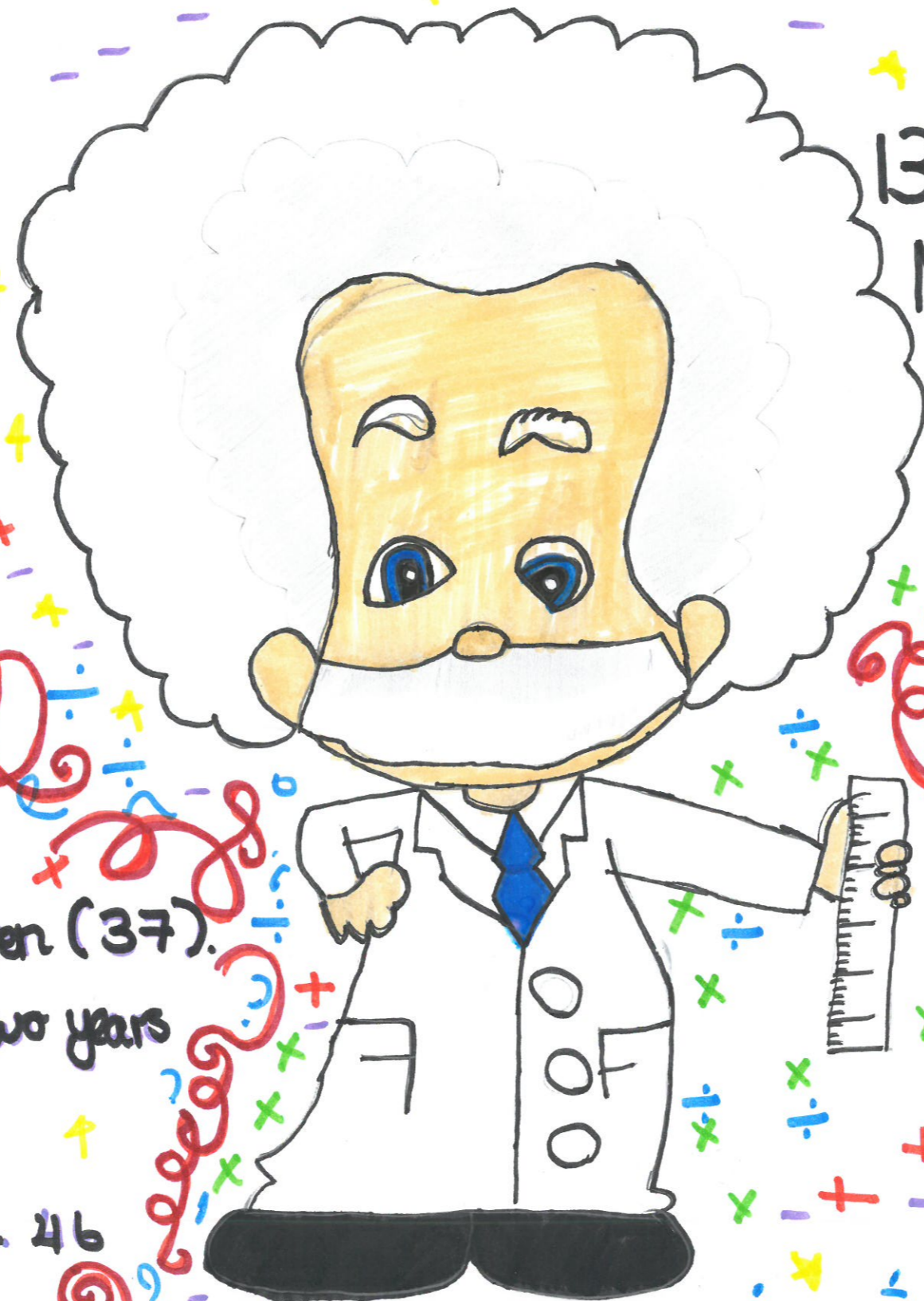
# Mathematics

# Primary

13-17

November 2017

# Challenge



Seven years ago,

Susan was thirty-seven (37).

How old will she be in two years time?

A. 34 B. 44 C. 67 D. 45 E. 46

What is the value

$$\frac{2}{3} + \frac{1}{3}$$

$$\frac{2}{3} - \frac{1}{3}?$$

# 2017

[www.primarymathschallenge.org.uk](http://www.primarymathschallenge.org.uk)